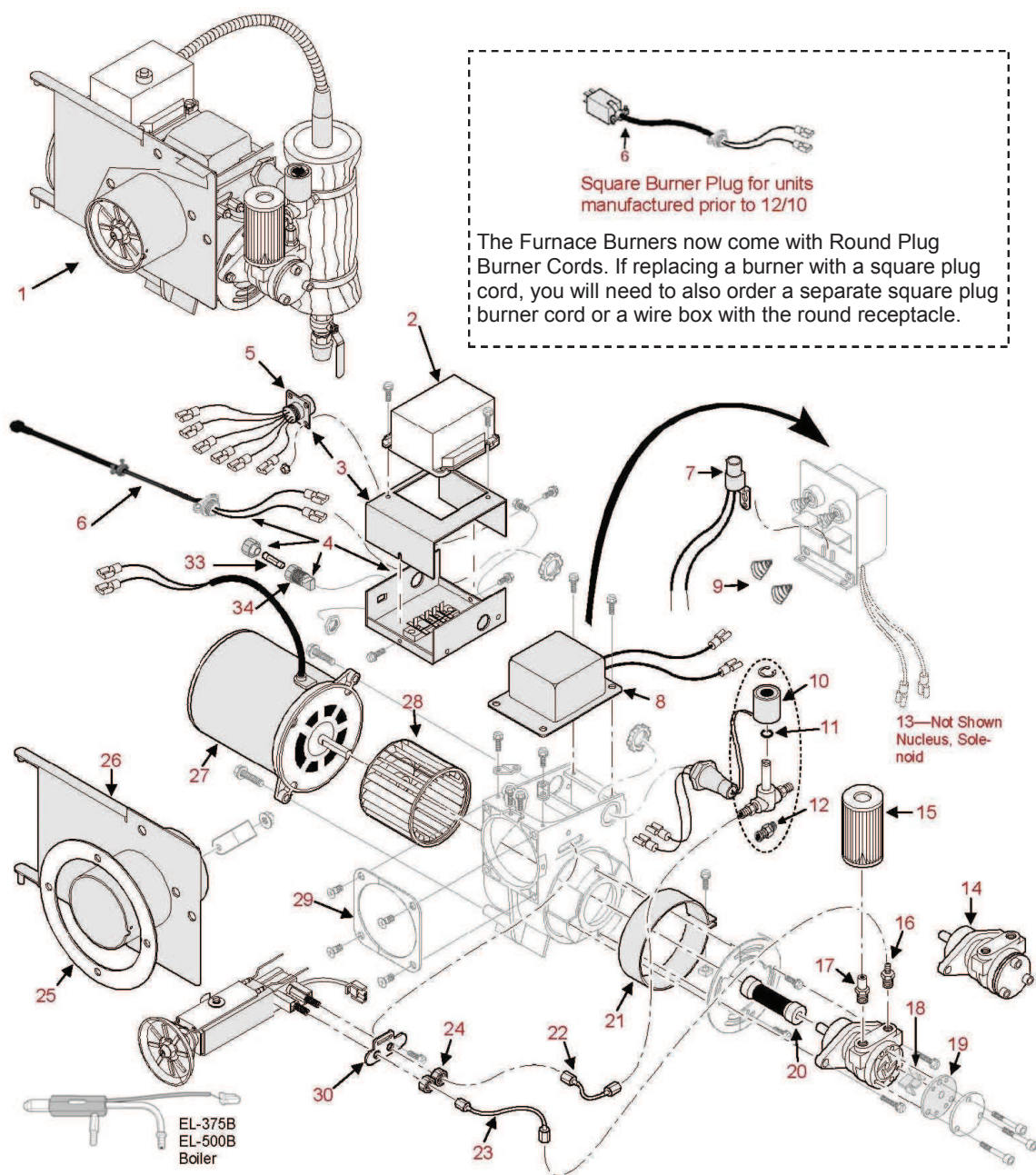


# Burner Assembly



Item	Part Description	Current Models						Past Models		Item Number	Qty	Price		
		140H	200H	340H	200B	375B	500B	SUN2	495B					
1	Burner w/preheater - 140H w/ round plug	x								04000081	1			
1	Burner w/preheater - 200H w/ round plug		x					x		04000082	1			
1	Burner w/ preheater - 340H w/ round plug			x						04000083	1			
1	Burner Assembly - 200B				x					14010118	1			
1	Burner Assembly - 375B					x				13010100	1			
1	Burner Assembly - 500B						x			13010102	1			
2	Control - Primary, Carlin 50200, 15 Second	x	x	x	x			x		06000082	1			
2	Control - Primary, 30 Second			x						20210115	1			
2	Control - Primary, 15 Second					x	x		x	20210118	1			
3	Wire Box Cover Assembly	x	x	x				x		14010112	1			

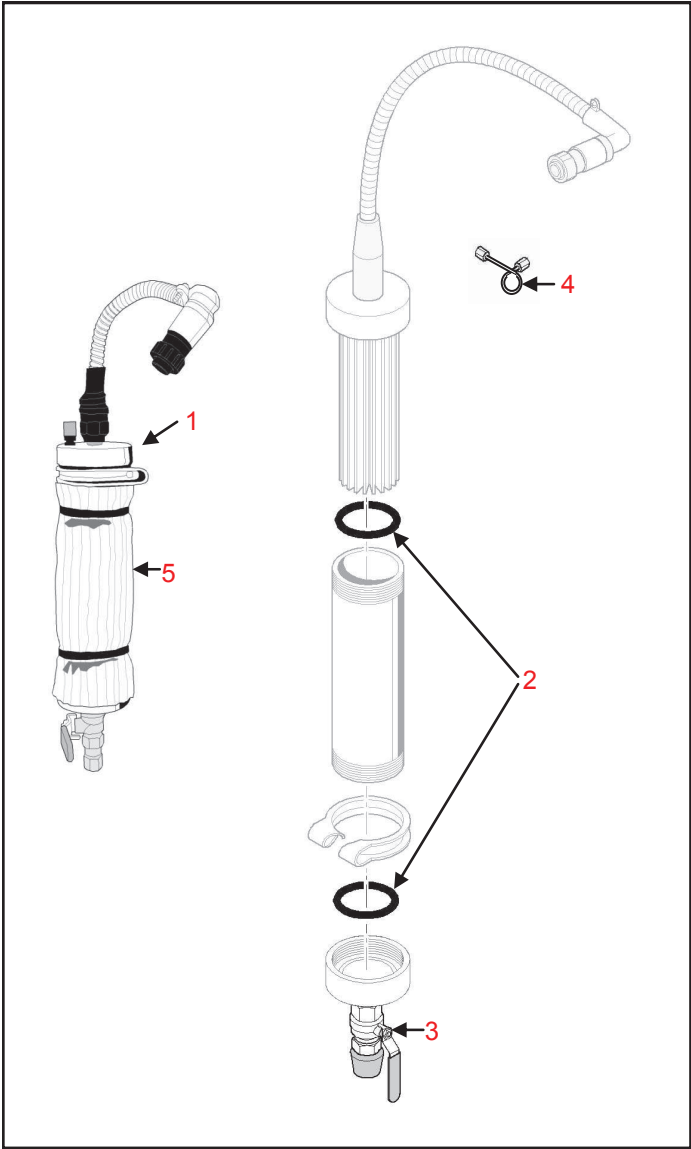


## Burner Assembly

Item	Part Description	Current Models						Past Models		Item Number	Price			
		140H	200H	340H	200B	375B	500B	SUN2	495B		Qty			
4	Wire Box Base Assembly - Round Plug	x	x					x		04000106	1			
4	Wire Box Base Assembly - Round Plug			x						04000107	1			
4	Wire Box Base Assembly				x	x	x			14010109	1			
5	Preheater Wiring Pigtail	x	x	x	x	x	x	x	x	20541310	1			
6	Wire - Burner Plug, Square (Pre Dec 2010)	x	x					x		20511205	1			
6	Wire - Burner Plug, Square (Pre Dec 2010)			x						20511206	1			
6	Burner Cord w/ Round Plug (Dec 2010 Frwd)	x	x							04000111	1			
6	Burner Cord w/ Round Plug (Dec 2010 Frwd)			x						04000112	1			
7	Detector - Cad Cell Flame	x	x	x	x	x	x	x	x	20210110	1			
8	Transformer - Ignition	x	x		x			x		20213137	1			
8	Transformer - Ignition			x		x	x		x	20213145	1			
9	Spring—Transformer	x	x	x	x	x	x	x	x	20213138	1			
10	Valve - Solenoid w/Fittings	x	x	x	x	x	x	x	x	14010134	1			
11	O-Ring - Solenoid Valve	x	x	x	x	x	x	x	x	20293199	1			
12	Fitting—Solenoid Valve	x	x	x	x	x	x	x	x	20491154	1			
13*	Nucleus-Solenoid Valve w/Spring	x	x	x	x	x	x	x	x	20293198	1			
14	Air Compressor	x	x	x	x	x	x	x	x	20210111	1			
15	Filter - Air Compressor	x	x	x	x	x	x	x	x	20210112	1			
15	Filter - Air Compressor (6 Pk)	x	x	x	x	x	x	x	x	05000037	1			
16	Union - 3/16FLx1/4MIP	x	x		x					14610010	1			
16	Union - 3/16FLx1/4MIP			x						14610005	1			
16	Union - 3/16FLx1/4 MIP					x	x		x	14610001	1			
17	Coupler - Air Comp Filter	x	x	x	x	x	x	x	x	20411121	1			
18	Vanes - Air Compressor (4 Pk)	x	x	x	x	x	x	x	x	14013153	1			
19	Plate - Carbon End	x	x	x	x	x	x	x	x	20213143	1			
20	Coupling - Compressor to Burner	x	x	x	x	x	x	x	x	20210122	1			
21	Band - Air, AF Chassis	x	x		x			x		20213132	1			
21	Band - Air , SF Chassis			x		x	x		x	20213133	1			
22	Copper Line - S-NB	x	x		x			x		05000038	1			
22	Copper Line - S-NB			x						05000039	1			
22	Copper Line - S-NB					x	x		x	05000040	1			
23	Copper Line - AC-NB	x	x	x	x	x	x	x	x	20630115	1			
24	Nut - Knurled 3/8-24	x	x	x	x	x	x	x	x	20410110	1			
25	Gasket - Burner Klinger	x	x	x				x		20910103	1			
25	Gasket - Flange				x	x	x		x	20210121	1			
26	Air Tube - Hinged	x	x					x		20311116	1			
26	Air Tube - Hinged - Diameter 4.3			x						04000062	1			
26	Air Tube - Non-Hinged				x					20210119	1			
26	Air Tube - Non-Hinged					x	x		x	20361187	1			
27	Motor - 1/5HP Burner	x	x		x			x		20213139	1			
27	Motor - 1/4HP Burner			x		x	x		x	20213147	1			
28	Wheel - Burner Blower	x	x		x			x		20213140	1			
28	Wheel - Burner Blower			x		x	x		x	20210117	1			
29	Flange - Burner Sq Plate AF/AF	x	x	x	x	x	x	x	x	20213136	1			
30	Escutcheon Plate (2 hole)	x	x		x			x		20213148	1			
30	Escutcheon Plate (1 hole)			x		x	x		x	20213153	1			
31	* Relay - Burner (500)						x		x	20210127	1			
32	* Flange - 4" Mounting Kit	x	x	x	x	x	x	x	x	20210120	1			
33	Fuse, 8 AMP	x	x	x	x	x	x	x	x	20510113	1			
34	Fuse Holder	x	x	x	x	x	x	x	x	20510112	1			
35	Screw - Air Compressor Mtng 1/4-20X1	x	x	x	x	x	x	x	x	20410106	1			

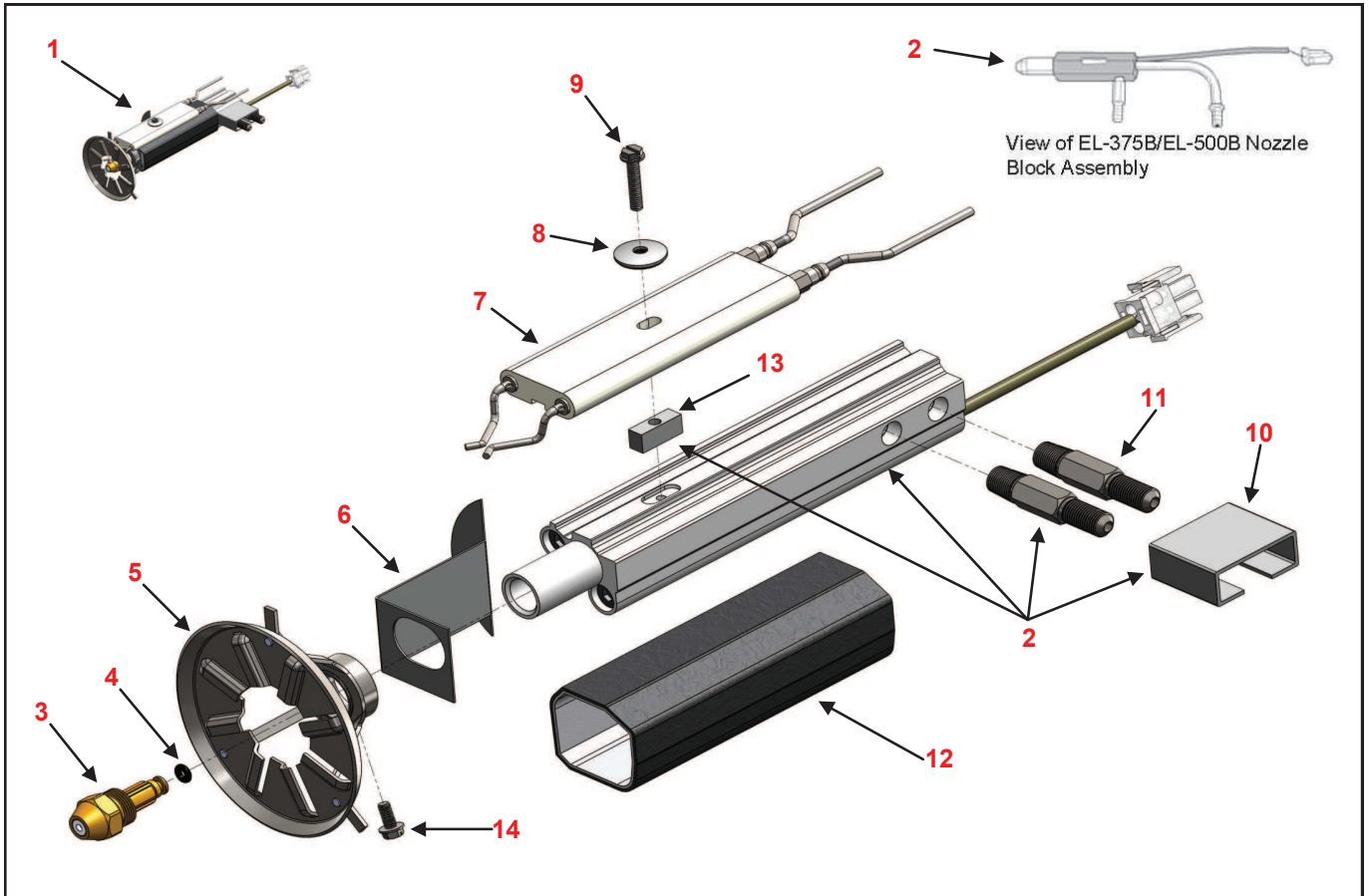
\* Not Pictured

Preheater Assembly



		Current Models							Past Models		Item Number	Price			
Item	Part Description	140H	200H	340H	200B	375B	500B	SUN2	495B	Qty					
1	Preheater Assembly	x								14040187	1				
1	Preheater Assembly		x							14040188	1				
1	Preheater Assembly			x						14040189	1				
1	Preheater Assembly				x					14040192	1				
1	Preheater Assembly					x				14040193	1				
1	Preheater Assembly						x		x	14040190	1				
2	Gasket - Preheater 2-3/8 O.D.	Note: Measure O.D. of gasket removed to select size required									20943126	1			
2	Gasket - Preheater 2-1/2 O.D.	Note: Measure O.D. of gasket removed to select size required									20940119	1			
2	Gasket - Preheater 2-5/8 O.D.	Note: Measure O.D. of gasket removed to select size required									20940122	1			
3	Valve - 1/4 NPT, Shutoff	x	x	x	x	x	x	x	x	20240173	1				
4	Copper Line - SV-PH	x	x	x				x		05000044	1				
4	Copper Line - SV-PH				x					05000045	1				
5	Insulation - Kit, Preheater Foil	x	x		x			x		05000046	1				
5	Insulation - Kit, Preheater Foil			x						05000047	1				
5	Insulation - Kit, Preheater Foil					x	x		x	05000048	1				
6	*Bolt - Preheater Mntg	x	x		x			x		20410120	1				
5	*Bolt - Preheater Mntg			x		x	x		x	20440156	1				

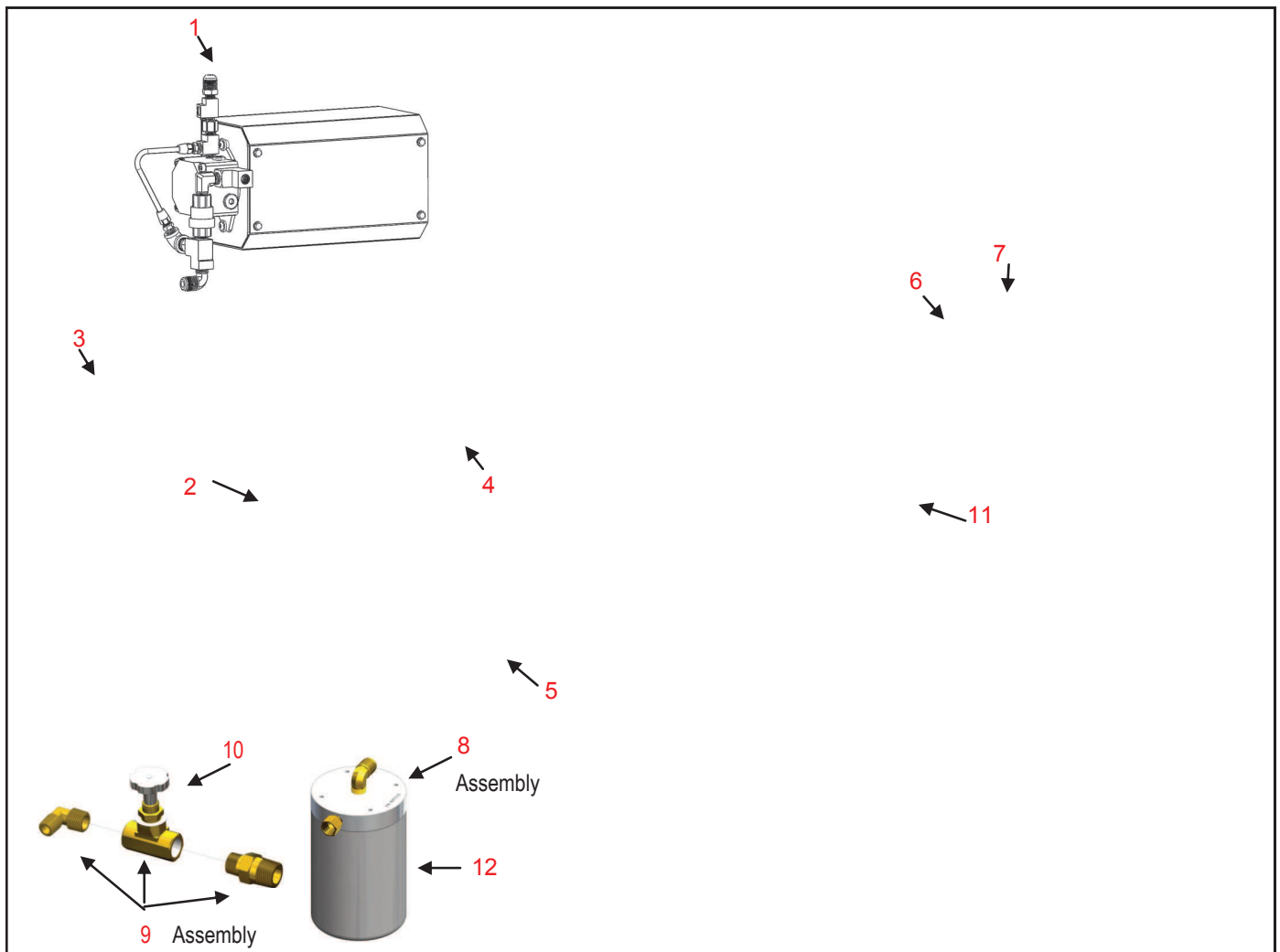
\* Not Pictured



Item	Part Description	Current Models					Past Models		Item Number	Price			
		140H	200H	340H	200B	375B	500B	SUN2		Qty			
1	Nozzle Line Assembly	x	x		x			x	14010124	1			
1	Nozzle Line Assembly			x					14010122	1			
1	Nozzle Line - Diameter 4.27 Inch FRH (12/10 Fwd)			x					04000091	1			
1	Nozzle Line Assembly					x	x		14010127	1			
2	Nozzle Block Assembly	x	x	x	x			x	04000056	1			
2	Nozzle Block Assembly					x	x		04000057	1			
3	Nozzle - #5	x	x		x			x	20210123	1			
3	Nozzle - #5 (50 Pk)	x	x		x			x	14013152	1			
3	Nozzle - #28			x		x	x		20210124	1			
3	Nozzle - #28 (50 Pk)			x		x	x		14013151	1			
4	O-Ring - Nozzle	x	x	x	x	x	x	x	20213152	1			
5	Head - Flame Retention	x	x		x			x	20311118	1			
5	Head - Flame Retention			x					20311119	1			
5	Head - Flame Retention			x		x	x		20311120	1			
6	Air Vane	x	x	x	x			x	20311126	1			
6	Air Vane					x	x		20311121	1			
7	Electrode	x	x	x	x			x	20211129	1			
7	Electrode (5 Pk)	x	x	x	x			x	05000049	1			
7	Electrode					x	x		20211128	1			
8	Washer - 8 x 3/4, Electrode	x	x	x	x	x	x	x	20410115	1			
9	Screw - 8-32 x 7/8 Hex	x	x	x	x	x	x	x	20410114	1			
10	Bracket-Nozzle Block Centering	x	x	x	x			x	20311117	1			
11	Fitting - Oil/Air Bulkhead	x	x	x	x	x	x	x	20411122	1			
12	Sleeving	x	x	x	x			x	20990149	1			
13	Key - Mount, Extr Nozzle Block	x	x	x	x			x	20311130	1			
13	Key - Mount, Hex Block					x	x		20311124	1			
14	Screw - 8-32 x 3/8	x	x	x	x	x	x	x	20410117	1			

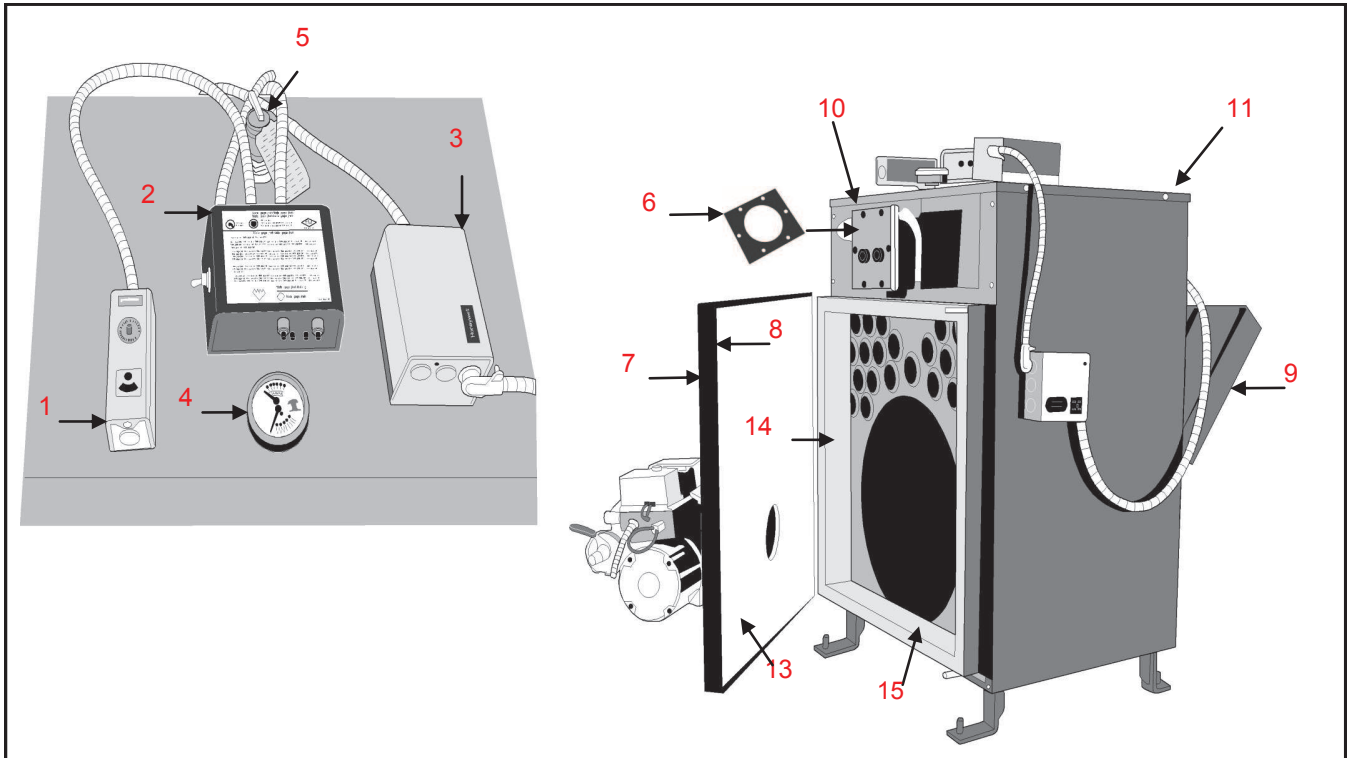
\* Not Pictured

# Fuel Pump Assembly



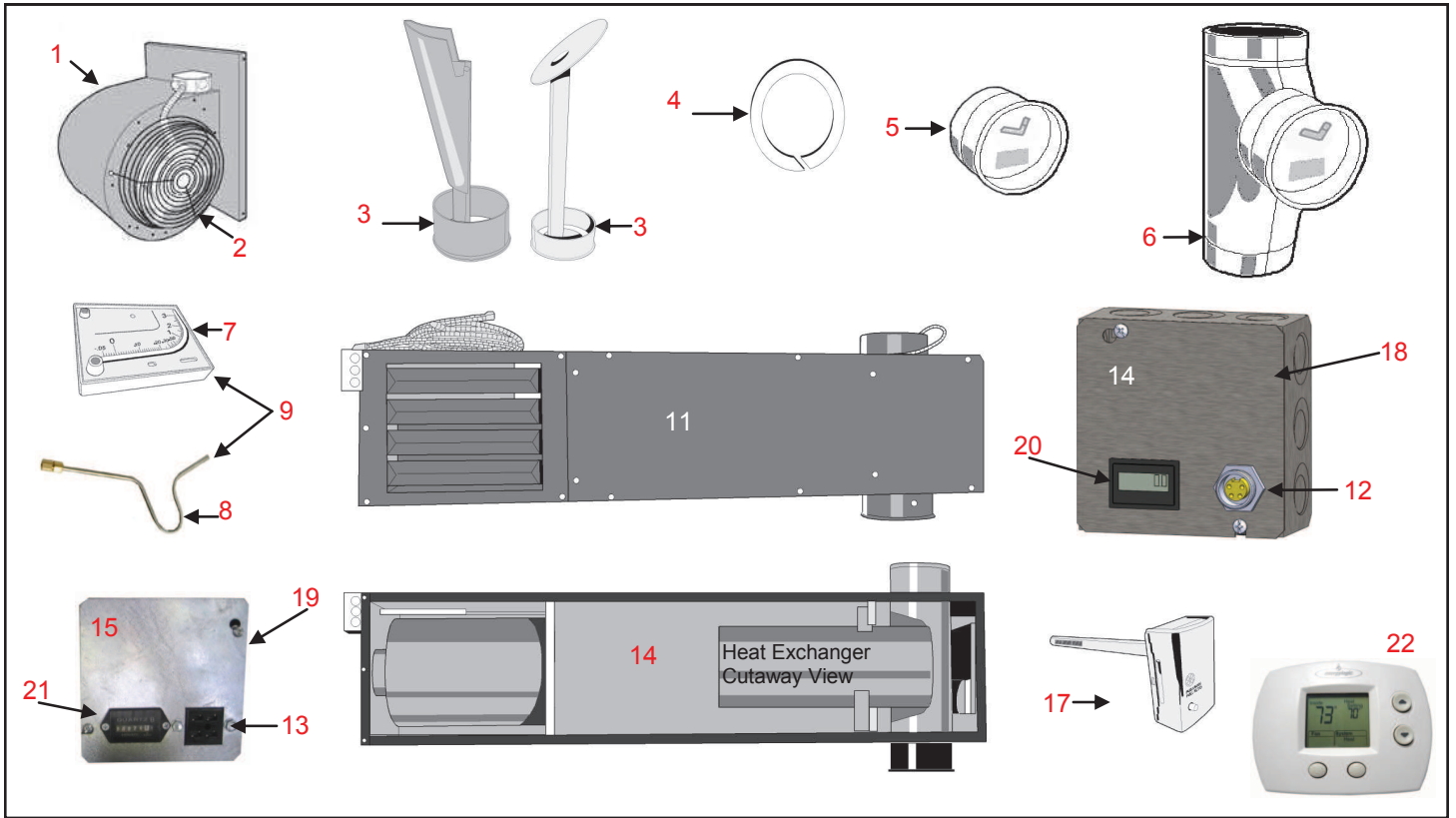
Item	Part Description	Current Models						Past Models		Item Number	Price			
		140H	200H	340H	200B	375B	500B	SUN2	495B		Qty			
1	Pump Assembly	x								14020300	1			
1	Pump Assembly		x					x		14020301	1			
1	Pump Assembly			x						14020302	1			
1	Pump Assembly				x					14020304	1			
1	Pump Assembly					x				14020305	1			
1	Pump Assembly						x		x	14020306	1			
2	Pump w/Fittings	x	x	x	x	x				14020155	1			
2	Pump w/Fittings						x			04000055	1			
3	Gauge - 0-160 PSI Pressure, 1/8	x	x	x	x	x	x	x	x	20270183	1			
4	Coupling - Pump to Motor	x	x	x	x	x	x	x		20220158	1			
5	Gauge - Vac/Pressure Combo 1/4"	x	x	x	x	x	x	x	x	20270188	1			
6	Gear Box	x								20220160	1			
6	Gear Box		x		x			x		20220161	1			
6	Gear Box			x						20220154	1			
6	Gear Box					x				20220195	1			
6	Gear Box						x		x	20220156	1			
7	Motor	x	x	x	x	x	x	x	x	20220155	1			
8	Filter Head Assbly w/ Filter	x	x	x	x	x	x	x	x	04000068	1			
9	Firestop Valve Assembly	x	x	x	x	x	x	x	x	04000067	1			
10	Firestop Valve	x	x	x	x	x	x	x	x	20270186	1			
11	Capacitor	x	x	x	x	x	x	x	x	20223198	1			
12	Filter - SS - Spin-On, 5 in.	x	x	x	x	x	x	x	x	20270185	1			
13	*Filter - SS - Spin-On, 5 in. (12-Pack)	x	x	x	x	x	x	x	x	05000052	1			
14	*Filter - SS - Spin-On, 8 in.	x	x	x	x	x	x	x	x	20203106	1			
15	* Kit-Mtr/Gearbox (old motor replc)	x								10023113	1			
16	* Kit-Mtr/Gearbox (old motor replc)		x							10023112	1			





Item	Part Description					Item Number	Price			
		200B	375B	500B	495B		Qty			
1	Aquastat—High Limit Temp Cut-off	x	x	x	x	06000134	1			
2	Control—Low Water	x	x	x	x	20263180	1			
3	Aquastat—Triple	x	x	x	x	20263179	1			
4	Gauge - Boiler Temp/Pressure	x	x	x	x	20663145	1			
5	Valve - Pressure Relief, 30 PSI	x	x	x	x	20663146	1			
6	Gasket - Boiler Coil				x	20913153	1			
6	Gasket - Boiler Coil	x	x	x		20363219	1			
7	Door	x	x	x		20363228	1			
8	Gasket Rope - Burner Door				x	05000053	1			
9	Gasket Rope - Breech	x	x			05000054	1			
9	Gasket Rope - Breech			x		05000055	1			
10	Coil Plate	x	x	x	x	20363218	1			
11	Boiler Vessel with Controls	x				04000058	1			
11	Boiler Vessel with Controls		x			04000059	1			
11	Boiler Vessel with Controls			x		04000060	1			
12	*Grease - Heat Conductive	x	x	x	x	20260190	1			
13	Insulation - Burner Door	x	x	x		20963132	1			
13	Insulation - Burner Door 19" X 22.5"				x	30963107	1			
14	Insulation-Left/Right-24 1/8" X 4" X 1 1/4"			x		20963142	1			
14	Insulation-Left/Right-24 1/8" X 3" X 1 1/4"	x	x			20963130	1			
15	Insulation-Top/Bottom-26 1/4" X 3" X 1"	x	x			20963131	1			
15	Insulation-Top/Bottom-26 1/4" X 4" X 1"			x		20963143	1			
16	*Insulation - Bottom				x	30963109	1			
16	*Insulation - Bottom Fill				x	30963108	1			
17	*Insulation - Frame Left				x	30963111	1			
18	*Insulation - Frame Right				x	30963112	1			
19	*Insulation - Frame Top				x	30963110	1			
20	*Insulation - Flue Box Door 22.3"X22.1"				x	20963135	1			
21	*Insulation - Flue Frame L/R 20.66"X5.86"				x	20963136	1			
22	*Insulation - Flue Frame T/B 21.87"X5.86"				x	20963137	1			
23	*Gasket - Upper Door, Tetraglass, Flat				x	05000056	1			
24	*Wire Harness Assembly - Boiler	x	x	x		14010117	1			
25	*Door - Boiler Tube, 495				x	20363198	1			
26	*High Temp Adhesive	x	x	x	x	30990103	1			
27	*Boiler Burner Plug Assembly	x	x	x	x	14010132	1			
28	*Wiring Box Assembly	x	x	x		14030179	1			

# Cabinet



Item	Part Description	Current Models						Past Models		Item Number	Price			
		140H	200H	340H	200B	375B	500B	SUN2	495B		Qty			
1	Blower - Assembly 1/3HP	x								13031001	1			
1	Blower - Assembly 1/2 HP		x					x		13031002	1			
1	Blower - Assembly 3/4 HP			x						13031003	1			
1	Wheel - Blower 9x9	x								06000039	1			
1	Wheel - Blower 10x10		x	x						20200200	1			
2	Guard - Blower Fan	x	x	x						20303110	1			
3	Cap - Drip, 1 Piece	x	x							20333158	1			
3	Cap - Drip, 1 Piece			x						20331136	1			
4	Gasket - Drip Cap	x	x	x						20933118	1			
5	Damper - 7 Inch Barometric, 8" Tee	x	x	x	x	x		x		20770110	1			
5	Damper - 9 Inch Barometric, 10" Tee						x		x	20770112	1			
5	Damper - 8 Inch Barometric, DW Tee	x	x	x	x	x		x		20770109	1			
6	Tee - Barometric & Damper - SS, 8"	x	x	x	x	x		x		04000045	1			
6	Tee - Barometric & Damper, 10"						x		x	14070199	1			
7	Gauge - Draft (Manometer)	x	x	x	x	x	x	x	x	20270184	1			
8	Probe-Draft Ga, Tube/Cnnctr	x	x	x	x	x	x	x	x	14003110	1			
9	Draft Gauge Assembly	x	x	x	x	x	x	x	x	14070198	1			
10	* Oil - Draft Gauge	x	x	x	x	x	x	x	x	20273189	1			

Item	Part Description	Current Models						Past Models		Item Number	Price			
		140H	200H	340H	200B	375B	500B	SUN2	495B		Qty			
11	Cabinet Sub Assembly—no harness			x						20131103	1			
12	Receptacle Round - Burner Wiring (12/10 Fwrd)	x	x	x						06000221	1			
13	Receptacle Square - Burner Wiring				x	x	x	x	x	20530138	1			
14	Wiring Box Assembly - Round Plug (12/10 Fwrd)	x	x	x						04000108	1			
15	Wiring Box Assembly - Square Plug	x	x	x						14030160	1			
16	Heat Exchanger Assembly w/Drip Cap	x								05000065	1			
16	Heat Exchanger Assembly w/Drip Cap		x					x		05000066	1			
17	Switch - Fan/Limit, 11 Inch	x	x	x				x		20230165	1			
18	Cover - Cabinet Wiring Box, Round Plug (1210 Fwrd)	x	x	x						06000216	1			
19	Cover - Cabinet Wiring Box, Sq Plug	x	x	x	x	x	x	x	x	14033208	1			
20	Hour Meter - Digital	x	x	x	x	x	x			06000224	1			
21	Hour Meter - Analog	x	x	x	x	x	x	x	x	20230166	1			
22	Thermostat - Wall, Digital	x	x	x	x	x	x	x	x	20230178	1			
23	* Panel - Cabinet, Burner	x	x							20331150	1			
23	* Panel - Cabinet, Burner			x						20331153	1			
24	* Panel - Cabinet, Filler	x	x							20331146	1			
24	* Panel - Cabinet, Filler			x						20233171	1			
25	* Panel - Cabinet, Top	x								20331148	1			
25	* Panel - Cabinet, Top		x							20331156	1			
26	* Panel - Cap, Top			x						20331147	1			
27	* Panel - Cabinet, Bottom	x								20331152	1			
27	* Panel - Cabinet, Bottom		x							20331155	1			
27	* Panel - Cabinet, Bottom			x						20331145	1			
28	* Panel - Cabinet, Side	x								20331144	1			
28	* Panel - Cabinet, Side		x							20331154	1			
28	* Panel - Cabinet, Left Side			x						20331149	1			
28	* Panel - Cabinet, Right Side			x						20331151	1			
29	* Motor - 1/3 HP Blower w/capacitor	x								20203113	1			
29	* Motor - 1/2 HP Blower w/capacitor		x					x		20203114	1			
29	* Motor - 3/4 HP Blower w/capacitor			x						20203115	1			
30	*Capacitor - 1/3 HP Blower	x								20231171	1			
30	*Capacitor - 1/2 HP Blower		x							20231172	1			
30	*Capacitor - 3/4 HP Blower			x						20231173	1			
31	*Wire Harness w/Round Plug (12/10 Fwrd)	x	x							04000071	1			
31	*Wire Harness w/Round Plug (12/10 Fwrd)			x						04000072	1			
31	*Wire Harness w/Square Plug (prior to 12/10)	x	x							20531314	1			
31	*Wire Harness w/Square Plug (prior to 12/10)			x						20531315	1			
32	*T/Stat Wire Assembly	x	x	x	x	x	x	x	x	20511311	1			
33	*Cover - 340H ERU, 6 Fastner			x						20331222	1			
34	*Cover - 340H ERU, 10 Fastner			x						20331221	1			
35	*Gasket, ERU Cover			x						05000068	1			



## Service & Maintenance Tools



Part Description	Current Models						Past Models		Item Number	Price			
	140H	200H	340H	200B	375B	500B	SUN2	495B		Qty			
Combustion Analyzer/Manometer, Printer	x	x	x	x	x	x	x	x	20203111	1			
Filter- Combustion Analyzer (5 Pack)	x	x	x	x	x	x	x	x	20203116	1			
Filter Assy-Combustion Anlz (Mini Pump)	x	x	x	x	x	x	x	x	20203117	1			
Filter-Combustion Analyzer (Oil)	x	x	x	x	x	x	x	x	20203118	1			



The Combustion Analyzer Kit is used to obtain furnace and boiler exhaust gas readings (for example CO<sub>2</sub>, CO O<sub>2</sub>), over fire pressure, draft and smoke spot.

Part Description	Current Models						Past Models		Item Number	Price			
	140H	200H	340H	200B	375B	500B	SUN2	495B		Qty			
Cleaning Tool Assembly	x	x	x	x	x	x	x	x	14033227	1			



The tool head is curved to shape the furnace heat exchanger and boiler combustion chamber in order to remove ash completely and efficiently. The pole is telescopic with a range of 4-8 feet, allowing full reach throughout all furnace heat exchangers.

Part Description	Current Models						Past Models		Item Number	Price			
	140H	200H	340H	200B	375B	500B	SUN2	495B		Qty			
Boiler Brush Tube-1.75" x 1/4 NPT				x					20092104	1			
Boiler Brush Tube-2.00" x 1/4 NPT					x	x		x	20092106	1			
Boiler Brush Kit—1.75" and 2.00 "				x	x	x		x	05000069	1			



Clean ash from boiler tubes using the Boiler brushes. Kit comes with both sizes.

Part Description	Current Models						Past Models		Item Number	Price			
	140H	200H	340H	200B	375B	500B	SUN2	495B		Qty			
Flue Brush-6" x 1/4 NPT	x	x		x			x		06000084	1			
Flue Brush-8" x 1/4 NPT	x	x	x	x	x		x		20092100	1			
Flue Brush-10" x 1/4 NPT						x		x	20092102	1			
Flue Brush Kit—6", 8" and 10"	x	x	x	x	x	x	x	x	05000070	1			



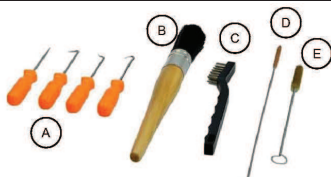
The brushes are carefully selected to perform the most common flue / chimney cleaning. Purchase individually or the kit comes with all 3 brushes.

Part Description	Current Models						Past Models		Item Number	Price			
	140H	200H	340H	200B	375B	500B	SUN2	495B		Qty			
Extension Rod T Handle	x	x	x	x	x	x	x	x	20092112	1			
Extension Rod 4' x 1/4" NPT	x	x	x	x	x	x	x	x	20092114	1			
Extension Rod 6' x 1/4" NPT	x	x	x	x	x	x	x	x	20092116	1			




Extension rods and handles to go with flue and boiler brushes.


Part Description	Current Models						Past Models		Item Number	Price			
	140H	200H	340H	200B	375B	500B	SUN2	495B		Qty			
Burner Brush Kit (includes all pictured)	x	x	x	x	x	x	x	x	05000071	1			
Burner Pick Hand Tool - A	x	x	x	x	x	x	x	x	20092122	1			
Fine Wire Hand Scratch Brush - C	x	x	x	x	x	x	x	x	20092118	1			
Parts Cleaning Brush - B	x	x	x	x	x	x	x	x	20092120	1			
Pipe Brush 0.200 - D	x	x	x	x	x	x	x	x	20092108	1			
Pipe Brush 3/8 - E	x	x	x	x	x	x	x	x	20092110	1			

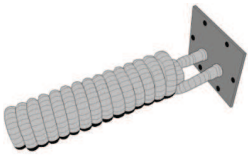


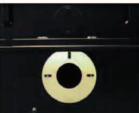

Burner Brush Kit includes all pictured or available for purchase separately.

- A. Pick Hand Tools—set of four (remove o-rings, clean threads and small orifices)
- B. Parts Cleaning Brush (clean painted components)
- C. Fine Wire Hand Scratch Brush (clean pre-heater cap, external nozzle block, burner blower wheel and unpainted components)
- D. 3/16" Pipe Brush (clean nozzle block and solenoid valve)
- E. 3/8" Pipe Brush (clean solenoid valve stem)

Part Description	Current Models						Past Models		Item Number	Price			
	140H	200H	340H	200B	375B	500B	SUN2	495B		Qty			
Kit - Boiler Mixing Valve - 1 inch				x	x				05000072	1			
 <p>Mixing Valve Kit for 200B and 375B—insures correct return water temperature to boiler is 140 degrees. Included in kit: 1" 3-way thermostatic mixing valve Temperature / Pressure Gauges (2) Instructions (loop diagram and flow curves)</p>													

Part Description	Current Models						Past Models		Item Number	Price			
	140H	200H	340H	200B	375B	500B	SUN2	495B		Qty			
Kit - Boiler Mixing Valve - 1.5 inch						x		x	05000073	1			
 <p>Mixing Valve Kit for 500B—insures correct return water temperature to boiler is 140 degrees. Included in kit: 1.5" 3-way thermostatic mixing valve Temperature / Pressure Gauges (2) Instructions (loop diagram and flow curves)</p>													

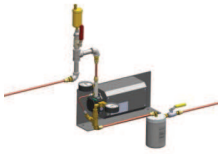
Part Description	Current Models						Past Models		Item Number	Price			
	140H	200H	340H	200B	375B	500B	SUN2	495B		Qty			
Coil - Domestic, Hot Water, 4 GPM				x					20362189	1			
Coil - Domestic, Hot Water, 6 GPM					x				20362188	1			
Coil - Domestic, Hot Water, 8 GPM						x			20362190	1			
 <p><b>Domestic Coil</b> Domestic Coils are used when the hydronic system requires an open-loop section where heated water is not returned to the closed-loop boiler system. For example, water is heated for washing cars at a carwash. The heated water will not be returned to the systems but allowed to run into a drain.</p>													

Part Description	Current Models						Past Models		Item Number	Price			
	140H	200H	340H	200B	375B	500B	SUN2	495B		Qty			
Kit - Maintenance, Boiler				x				x	05000029	1			
Kit—Maintenance,Boiler					x	x		x	05000030	1			
 <p><b>Boiler Burner Gasket</b></p>  <p>The maintenance kit provides all the necessary service parts to install into the unit once ash is removed from the heat exchanger, the burner assembly is disassembled and the components are cleaned. Boiler Maintenance Kit includes: 1 Air Compressor Filter 1 Spin-on, Stainless Steel Mesh Filter 2 Solenoid Valve O-ring 1 Burner Flange Gasket 2 Preheater Gaskets (2 5/8) 1 Nozzle</p>													

## Accessories - Fuel Delivery Kits

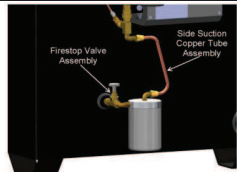


Part Description	Current Models						Past Models		Item Number	Price			
	140H	200H	340H	200B	375B	500B	SUN2	495B		Qty			
Top Suction Kit with AirScape and Foot Valve	x	x	x	x	x	x	x	x	05000117	1			
Valve - Foot, 1"	x	x	x	x	x	x	x	x	04000086	1			



Save time / money and increase reliability when delivering fuel from the top of a tank. An EnergyLogic Top Suction Kit combines fuel pick-up with a low fuel cut off switch along with the patent pending AirScape device. AirScape captures and purges air and gases that are pulled from the fuel. The springless foot valve prevents loss of prime during long off cycles. This simple to install product is also adjustable to work with most tanks.  
\*Please refer to EL Accessory Guide for more information about this product.

Part Description	Current Models						Past Models		Item Number	Price			
	140H	200H	340H	200B	375B	500B	SUN2	495B		Qty			
Side Suction Kit - 130 / 250 Gallon Tanks	x	x	x	x	x	x	x	x	05000120	1			
Side Suction Kit - 500 / 70 Gallon Tanks	x	x	x	x	x	x	x	x	05000123	1			



Side Suction Kits are designed to use with EnergyLogic storage tanks.

Kit includes:

Side Suction Tube Assembly, Firestop Valve Assembly, Brass Fittings to connect the metering pump to side of the EL tank, and Low Level Cut-off Switch

\*Filter head assembly is now included with the furnace / boiler.

\*\*Please refer to EL Accessory Guide for more information about this product.

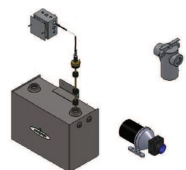
Part Description	Current Models						Past Models		Item Number	Price			
	140H	200H	340H	200B	375B	500B	SUN2	495B		Qty			
Single-Unit Gravity Feed System	x	x	x	x	x	x	x	x	05000118	1			
GFS Pump Bracket with Firestop Valve	x	x	x	x	x	x	x	x	04000097	1			



This kit is designed to work with the customer's existing tall tank. The GFS pump pulls from the tank and meters a flow amount that is slightly more than what the furnace metering pump needs, and the remainder (along with any air) returns to the tank. The furnace metering pump is set to draw from the bottom of the reservoir (gravity fed). The first pump does all the suction work, and the metering pump does all the pushing work. A float switch in the reservoir will shut off the furnace if the oil in the reservoir becomes too low due to a clogged filter on the first pump (or lack of oil in the large tank). Both pumps are wired parallel to operate in unison when there is a call for heat.

\*Please refer to EL Accessory Guide for more information about this product.

Part Description	Current Models						Past Models		Item Number	Price			
	140H	200H	340H	200B	375B	500B	SUN2	495B		Qty			
Multi-Unit Gravity Feed System (GFS)	x	x	x	x	x	x	x	x	05000110	1			
GFS Float Switch Assembly w/LFCO - A & B	x	x	x	x	x	x	x	x	04000050	1			
* 3-Float Switch (GFS)	x	x	x	x	x	x	x	x	06000002	1			
* Relay, DPDT 120V / 10A	x	x	x	x	x	x	x	x	06000004	1			
* Fuse, 10 Amp	x	x	x	x	x	x	x	x	20552330	1			
* Transformer, 240	x	x	x	x	x	x	x	x	20207110	1			
* GFS Base Relay - 14 Terminal	x	x	x	x	x	x	x	x	06000136	1			
* GFS Relay, 4PDT - 24V, 14 Terminal	x	x	x	x	x	x	x	x	06000137	1			
* GFS Relay, DPDT, 24V, 8 Terminal	x	x	x	x	x	x	x	x	06000139	1			
GFS Tank Assy - 20 Gal Day - B	x	x	x	x	x	x	x	x	04000001	1			
GFS Pump - Transfer, 40 GPH - C	x	x	x	x	x	x	x	x	06000001	1			
Filter - Cleanable, Basket - D	x	x	x	x	x	x	x	x	06000005	1			
* Seal - Basket Filter	x	x	x	x	x	x	x	x	06000152	1			
*GFS Pump Bracket with Firestop Valve	x	x	x	x	x	x	x	x	04000097	1			



EnergyLogic's Gravity Feed System Kit includes the parts you need to set up a multi-unit system, feeding up to ten units from a single, large tank. Customers can choose to locate the main storage tank indoors or outdoors. Customers can eliminate the cost of additional tanks while maximizing floor space and minimizing mess and maintenance. The system stores a small amount of fuel in an EnergyLogic Day Tank at a height above the Metering Pump, immersing the metering pump in fuel. The system continuously monitors and fills the Day Tank, while providing a means to interrupt furnace / boiler operation in case of low fuel in the Day Tank.

\*Please refer to EL Accessory Guide for more information about this product.

Part Description	Current Models						Past Models		Item Number	Price			
	140H	200H	340H	200B	375B	500B	SUN2	495B		Qty			

70 Gallon Single Wall Day Tank

x

x

x

x

x

x

x

x

x

x

x

x

x

x

x

x

x



**70 gallon tank will not support a furnace.**

Standard tank includes drain valve assembly and sight gauge.

Part Description	Current Models						Past Models		Item Number	Price			
	140H	200H	340H	200B	375B	500B	SUN2	495B		Qty			

130 Gallon Single Wall Workbench Tank

x

x

x

x

x

x

x

x

x

x

x

x

x

x

x

x



**130 gallon tank will not support a 340 furnace.**

Standard tank includes drain valve assembly and sight gauge. This tank should be used as a day tank for larger models.

**\*Tank Mount Kit must be ordered separately.**

Part Description	Current Models						Past Models		Item Number	Price			
	140H	200H	340H	200B	375B	500B	SUN2	495B		Qty			

250 Gallon Single Wall Workbench Tank

x

x

x

x

x

x

x

x

x

x

x

x

x

x

x

x

250 Gallon Double Wall Workbench Tank

x

x

x

x

x

x

x

x

x

x

x

x

x

x

x

x



Single Wall



Double Wall

Standard tank includes drain valve assembly and sight gauge.

**\*Tank Mount Kit must be ordered separately.**

Part Description	Current Models						Past Models		Item Number	Price			
	140H	200H	340H	200B	375B	500B	SUN2	495B		Qty			

500 Gallon Single Wall Workbench Tank

x

x

x

x

x

x

x

x

x

x

x

x

x

x

x

x

500 Gallon Double Wall Workbench Tank

x

x

x

x

x

x

x

x

x

x

x

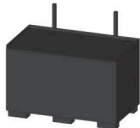
x

x

x

x

x



Single Wall



Double Wall

Standard tank includes drain valve assembly and sight gauge.

**\*Tank Mount Kit must be ordered separately.**

Part Description	Current Models						Past Models		Item Number	Price			
	140H	200H	340H	200B	375B	500B	SUN2	495B		Qty			

295 Gallon SW Tall Rectangular Tank

x

x

x

x

x

x

x

x

x

x

x

x

x

x

x

x



**295 gallon tank will not support a furnace.**

The rectangular tank is a smaller footprint vertical tank, 38"W X 30"D X 64.5"H. Standard tank includes drain valve assembly and sight gauge.

Part Description	Current Models						Past Models		Item Number	Price			
	140H	200H	340H	200B	375B	500B	SUN2	495B		Qty			

Tank - 275 Gallon Storage Tote

x

x

x

x

x

x

x

x

x

x

x

x

x

x

x

x



The 275 Gallon Storage Tote may be used for temporary storing or moving fuel. The metal structure around the plastic tank is fork lift and pallet jack friendly. The small footprint does not take up a lot of facility space. Translucent material allows a person to see the level of fluid in the tank.

## Tank Mount Kits & Tank Accessories



Part Description	Current Models						Past Models		Item Number	Price			
	140H	200H	340H	200B	375B	500B	SUN2	495B		Qty			

Tank Mount Kit - 130 Gallon Tank	x	x					x		05000074	1			
----------------------------------	---	---	--	--	--	--	---	--	----------	---	--	--	--



Tank Mount Kit includes mounting tubes, furnace support arms, hardware and discharge copper. For use with EnergyLogic 130 gallon workbench tank.

Part Description	Current Models						Past Models		Item Number	Price			
	140H	200H	340H	200B	375B	500B	SUN2	495B		Qty			

Tank Mount Kit - 140H/200H	x	x					x		05000075	1			
----------------------------	---	---	--	--	--	--	---	--	----------	---	--	--	--



Tank Mount Kit includes furnace support arms, hardware and discharge copper. For use with EnergyLogic 250 and 500 gallon workbench tanks.

Part Description	Current Models						Past Models		Item Number	Price			
	140H	200H	340H	200B	375B	500B	SUN2	495B		Qty			

Tank Mount Kit - 340H			x						05000076	1			
-----------------------	--	--	---	--	--	--	--	--	----------	---	--	--	--



Tank Mount Kit includes furnace support arms, angle braces, hardware and discharge copper. For use with EnergyLogic 250 and 500 gallon workbench tanks.

Part Description	Current Models						Past Models		Item Number	Price			
	140H	200H	340H	200B	375B	500B	SUN2	495B		Qty			

AirScape Upgrade	x	x	x	x	x	x	x	x	04000066	1			
------------------	---	---	---	---	---	---	---	---	----------	---	--	--	--

AirScape Air Release Valve Assemble	x	x	x	x	x	x	x	x	04000113	1			
-------------------------------------	---	---	---	---	---	---	---	---	----------	---	--	--	--



The AirScape air trap and purge device captures and releases air that may collect in the fuel line as it travels from the pump to the pre-heater. AirScape works well in existing installations where the customer has a tall tank, along run from the tank to the unit and have very cold conditions. Oil separates and air has a chance to be introduced into the system.

Part Description	Current Models						Past Models		Item Number	Price			
	140H	200H	340H	200B	375B	500B	SUN2	495B		Qty			

Vent - 4 Inch Emergency Tank	x	x	x	x	x	x	x	x	20252174	1			
------------------------------	---	---	---	---	---	---	---	---	----------	---	--	--	--



Install into aboveground storage tanks as a code requirement to help prevent the tank from becoming over-pressurized and possible rupturing if ever exposed to fire.

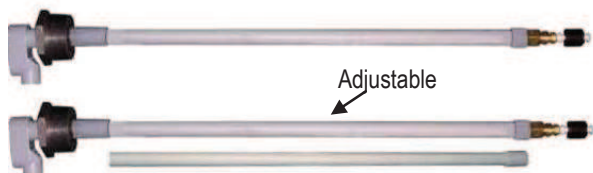
Part Description	Current Models						Past Models		Item Number	Price			
	140H	200H	340H	200B	375B	500B	SUN2	495B		Qty			

Switch-Low Fuel, 70 / 500 Gal EL Tank, 30 in.	x	x	x	x	x	x	x	x	14052236	1			
---	---	---	---	---	---	---	---	---	----------	---	--	--	--

Switch-Low Fuel, 130 Gal EL Tank 19.5 in.	x	x	x	x	x	x	x	x	04000033	1			
---	---	---	---	---	---	---	---	---	----------	---	--	--	--

Switch-Low Fuel, 250 Gal EL Tank, 26 in.	x	x	x	x	x	x	x	x	14052234	1			
--	---	---	---	---	---	---	---	---	----------	---	--	--	--

Switch-Low Fuel, Adjust, tanks ≥ 62 in.	x	x	x	x	x	x	x	x	14052235	1			
---	---	---	---	---	---	---	---	---	----------	---	--	--	--



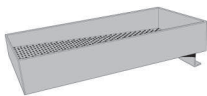
A Low Fuel Cut-off Switch will interrupt the operation of the unit when the fuel level is too low. This will prevent air and contaminants from entering the fuel system.

\*\* Refer to Dealer Price Schedule Catalog

Part Description	Current Models						Past Models		Item Number	Price			
	140H	200H	340H	200B	375B	500B	SUN2	495B		Qty			
Gauge - Tank, 250 Gallon	x	x	x	x	x	x	x	x	20252140	1			
Gauge - Tank, 130 Gallon	x	x	x	x	x	x	x	x	06000081	1			
Gauge - Tank, 70/500 Gallon	x	x	x	x	x	x	x	x	20252142	1			
Gauge - Tank, 295 Gallon	x	x	x	x	x	x	x	x	06000187	1			

A tank fuel gauge is used to monitor the fuel level of a fuel tank.

Part Description	Current Models						Past Models		Item Number	Price			
	140H	200H	340H	200B	375B	500B	SUN2	495B		Qty			
Filter Drain Pan-Small, 9 in. X 18 in.	x	x	x	x	x	x	x	x	20352225	1			
Filter Drain Pan-Large, 16 in. X 18 in.	x	x	x	x	x	x	x	x	20352226	1			



The Filter Drain Pan is used as a funnel for draining and screening used oil from filters or components into the storage tank.

Part Description	Current Models						Past Models		Item Number	Price			
	140H	200H	340H	200B	375B	500B	SUN2	495B		Qty			
Multi Low Level Switch 2	x	x	x	x	x	x	x	x	14052225	1			
Multi Low Level Switch 4	x	x	x	x	x	x	x	x	14052232	1			



A Multi-Unit Low Fuel Cut-Off Control allows multiple furnaces and/or boilers to draw fuel from one tank with their operation interrupted when the fuel level becomes too low. This will prevent air from entering the fuel system.

Part Description	Current Models						Past Models		Item Number	Price			
	140H	200H	340H	200B	375B	500B	SUN2	495B		Qty			
Filter Assembly - Cleanable 5"	x	x	x	x	x	x	x	x	14003111	1			
Filter Assembly - Lg Cleanable 8"	x	x	x	x	x	x	x	x	14003114	1			
Small Cleanable Filter - 5"	x	x	x	x	x	x	x	x	20203110	1			
Large Cleanable Filter - 8"	x	x	x	x	x	x	x	x	20203112	1			



Use a cleanable filter when the reoccurring costs of suction line filter replacements has grown to a noticeable amount.

Part Description	Current Models						Past Models		Item Number	Price			
	140H	200H	340H	200B	375B	500B	SUN2	495B		Qty			
Tank Level Control Kit with 4-Float Switch	x	x	x	x	x	x	x	x	05000115	1			
Auto Transfer Kit with Electric Pump	x	x	x	x	x	x	x	x	05000116	1			



**Tank Level Control Kit with 4-Float**

**Auto Transfer Kit with Electric Pump**

The float switch assembly monitors the fuel level in the tank that is to be auto-filled. The switch assembly is custom made (height and location of switches) to match your tank. When there is a call to fill, the electric pump (or fill solenoid for a diaphragm pump system) is energized. The control panel is equipped with lights to inform the operator when the fuel is low and when the tank is being filled. Overfill protection is provided via a redundant solenoid, and alarm.

The Auto Transfer Kit with Electric Pump comes with the 40gph waste oil electric transfer pump and 8" Cleanable Element Filter.

\*Please refer to EL Accessory Guide for more information about these products.

Part Description	Current Models						Past Models		Item Number	Price			
	140H	200H	340H	200B	375B	500B	SUN2	495B		Qty			
Band - Heater, Filter	x	x	x	x	x	x	x	x	20503109	1			



A Hot Filter Band would be used when the fuel in the tank that will pass through the spin-on filter is below 50°F.



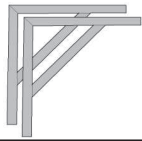
## Accessories



Part Description	Current Models						Past Models		Item Number	Price			
	140H	200H	340H	200B	375B	500B	SUN2	495B		Qty			

Bracket - Furnace Wall Mount (pair)

The furnace wall brackets provide a furnace mounting structure for wall mounting of the furnace.



Part Description	Current Models						Past Models		Item Number	Price			
	140H	200H	340H	200B	375B	500B	SUN2	495B		Qty			

Transition-Square to Round, Duct, 12 in.

The Square to Round transition allows the installation of round duct to the furnace.

Transition-Square to Round, Duct, 16 in.

Transition-Square to Round, Duct, 20 in.

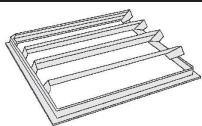


Part Description	Current Models						Past Models		Item Number	Price			
	140H	200H	340H	200B	375B	500B	SUN2	495B		Qty			

Louver - Standard

Louver - Standard

A Standard Louver can be added to the furnace to allow air dispersion from both sides when the furnace is ceiling mounted.



Part Description	Current Models						Past Models		Item Number	Price			
	140H	200H	340H	200B	375B	500B	SUN2	495B		Qty			

Louver - Multi-Direction

Louver - Multi-Direction

A Multi-Directional Louver allows the operator to direct and spread the heated air to a more beneficial location.



Part Description	Current Models						Past Models		Item Number	Price			
	140H	200H	340H	200B	375B	500B	SUN2	495B		Qty			

Meter - Remote Hour

Meter - Remote Hour

A Remote Hour Meter may be used when the hour meter that comes standard with every furnace and boiler is difficult to view.

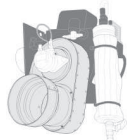


Part Description	Current Models						Past Models		Item Number	Price			
	140H	200H	340H	200B	375B	500B	SUN2	495B		Qty			

Air Intake - Outside, AF

Air Intake - Outside, SF

A Fresh Air Intake Kit would be used for environments prone to positive or negative air pressures or environments with debris floating in the air (for example, saw mill).



Part Description	Current Models						Past Models		Item Number	Price			
	140H	200H	340H	200B	375B	500B	SUN2	495B		Qty			

High Point Bleed Assembly

Use a High Point Bleed to purge air from the fuel system when the fuel piping is routed with high points which can trap air.



Part Description	Current Models						Past Models		Item Number	Price			
	140H	200H	340H	200B	375B	500B	SUN2	495B		Qty			

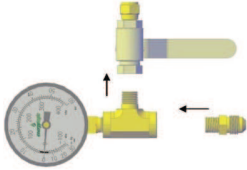
Draft Inducer	x	x	x	x	x	x	x	x	05000090	1			
---------------	---	---	---	---	---	---	---	---	----------	---	--	--	--



The Draft Inducer Kit would be used in an installation where a low draft condition is present. The low draft condition may not be determined until after the furnace or boiler is installed and operational. Ensure the furnace or boiler is operating as efficiently as possible in the given conditions.

Part Description	Current Models						Past Models		Item Number	Price			
	140H	200H	340H	200B	375B	500B	SUN2	495B		Qty			

Kit - Gauge, Remote System All	x	x	x	x	x	x	x	x	05000091	1			
--------------------------------	---	---	---	---	---	---	---	---	----------	---	--	--	--



Use a Remote System Gauge Kit to monitor fuel system pressure when the fuel pump pressure gauge is not in sight when working at the burner.

Part Description	Current Models						Past Models		Item Number	Price			
	140H	200H	340H	200B	375B	500B	SUN2	495B		Qty			

Air Compressor Silencer Kit	x	x	x	x	x	x	x	x	05000111	1			
-----------------------------	---	---	---	---	---	---	---	---	----------	---	--	--	--

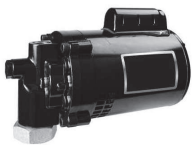
Replacement Filter - Silencer Kit	x	x	x	x	x	x	x	x	06000150	1			
-----------------------------------	---	---	---	---	---	---	---	---	----------	---	--	--	--



The Air Compressor Noise Silencer Kit provides 6 dB in noise reduction, which is a clearly noticeable reduction in noise level. For every 3 dB, another 50% of the remaining sound pressure is eliminated. We are able to do this by reducing much of the higher frequency noise from the compressor. The it is simple to install and replaces the standard inlet and outlet components of the air compressor. Necessary components are shipped in complete kits. We are also offering replacement filters for the kit.

Part Description	Current Models						Past Models		Item Number	Price			
	140H	200H	340H	200B	375B	500B	SUN2	495B		Qty			

Pump - Electric, Transfer 4.25 GPM	x	x	x	x	x	x	x	x	20202129	1			
------------------------------------	---	---	---	---	---	---	---	---	----------	---	--	--	--



An electric transfer pump is used to transfer fuel from a remote bulk fuel source to a day tank. It allows a bulk fuel storage tank to be remotely located (typically outdoors) with a separate day tank located indoors at or near the burner. Typically the indoor day tank is small in size requiring minimal space.

Part Description	Current Models						Past Models		Item Number	Price			
	140H	200H	340H	200B	375B	500B	SUN2	495B		Qty			

Pump - Diaphragm 1 in., 40 GPM	x	x	x	x	x	x	x	x	20202122	1			
--------------------------------	---	---	---	---	---	---	---	---	----------	---	--	--	--

Pump - Diaphragm 3/4 in., 16GPM	x	x	x	x	x	x	x	x	20202121	1			
---------------------------------	---	---	---	---	---	---	---	---	----------	---	--	--	--

*Pump - Diaphragm Air Install Kit	x	x	x	x	x	x	x	x	20202126	1			
-----------------------------------	---	---	---	---	---	---	---	---	----------	---	--	--	--

*Pump - Diaphragm Press Relief Valve	x	x	x	x	x	x	x	x	20202128	1			
--------------------------------------	---	---	---	---	---	---	---	---	----------	---	--	--	--

*Pump - Diaphragm Wall Mt, 3/4 in.	x	x	x	x	x	x	x	x	20202124	1			
------------------------------------	---	---	---	---	---	---	---	---	----------	---	--	--	--

*Pump - Diaphragm Wall Mt, 1 in.	x	x	x	x	x	x	x	x	20202125	1			
----------------------------------	---	---	---	---	---	---	---	---	----------	---	--	--	--

*Pump - Diaphragm 20202121 Rebuild Kit	x	x	x	x	x	x	x	x	20202134	1			
--	---	---	---	---	---	---	---	---	----------	---	--	--	--

*Pump - Diaphragm 20202122 Rebuild Kit	x	x	x	x	x	x	x	x	06000287	1			
--	---	---	---	---	---	---	---	---	----------	---	--	--	--

*Pump - Diaphragm Fluid Install Kit	x	x	x	x	x	x	x	x	20202127	1			
-------------------------------------	---	---	---	---	---	---	---	---	----------	---	--	--	--

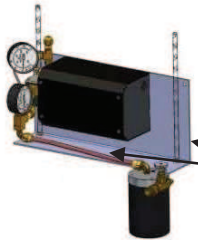


A pneumatic transfer pump is used to transfer fuel from a remote bulk fuel source to a day tank. It allows a bulk fuel storage tank to be remotely located (typically outdoors) with a separate day tank located indoors at or near the burner. Typically the indoor day tank is small in size requiring minimal space.

## Accessories



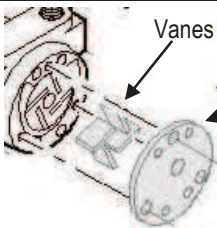
Part Description	Current Models						Past Models		Item Number	Price			
	140H	200H	340H	200B	375B	500B	SUN2	495B		Qty			
Kit - Pump and Filter Bracket	x	x	x	x	x	x	x	x	05000095	1			
GFS Pump Bracket Kit with Firestop Valve	x	x	x	x	x	x	x	x	04000097	1			



**Kit—Pump & Filter Bracket**  
Bracket available for mounting the pump and filter head assembly on a Gravity Feed System. Use all thread rod to hang from bottom of the furnace.

Bracket & copper tube assembly only  
(pump & filter head not included)

Part Description	Current Models						Past Models		Item Number	Price			
	140H	200H	340H	200B	375B	500B	SUN2	495B		Qty			
Kit - Maintenance, Air Comp.	x	x	x	x	x	x	x	x	05000096	1			



The Air Compressor Maintenance kit comes with 4 replacement vanes and the carbon end plate.

Part Description	Current Models						Past Models		Item Number	Price			
	140H	200H	340H	200B	375B	500B	SUN2	495B		Qty			
Kit - Maintenance, 140H/200H	x	x							05000027	1			
Kit - Maintenance, 340H			x						05000028	1			
Kit - Maintenance, 340H Large Filter			x						05000031	1			

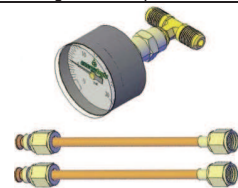


The maintenance kit provides all the necessary service parts to install into the unit once ash is removed from the heat exchanger, the burner assembly is disassembled and the components are cleaned.

Furnace Maintenance Kit includes:

- |                             |  |
|-----------------------------|--|
| 1 Air Compressor Filter     | 1 Spin-on, Stainless Steel Mesh Filter |
| 1 Solenoid Valve O-ring     | 1 Burner Gasket                        |
| 2 Preheater Gaskets (2 5/8) | 1 Nozzle                               |
| 1 Drip Cap Gasket           |  |

Part Description	Current Models						Past Models		Item Number	Price			
	140H	200H	340H	200B	375B	500B	SUN2	495B		Qty			
Kit - Gauge, Air Comp Test	x	x	x	x	x	x	x	x	05000092	1			



An Air Compressor Test Gauge is used to check the output pressure of the air compressor during burner operation.

### Discontinued Parts

Part Description	Current Models						Past Models		Item Number	Price			
	140H	200H	340H	200B	375B	500B	SUN2	495B		Qty			
Smartburner Upgrade							x		10003104	1			
Hot Filter Upgrade							x		10003103	1			
Early Model GFS - GFS Float Switch Assy	x	x	x	x	x	x	x	x	04000002	1			
Early Model GFS - GFS Relay Terminal Base	x	x	x	x	x	x	x	x	06000003	1			
Pump - Diaphragm 2 in., 150 GPM	x	x	x	x	x	x	x	x	20202123	1			

Part Description	Current Models						Past Models		Item Number	Price			
	140H	200H	340H	200B	375B	500B	SUN2	495B		Qty			
6 Inch - Flue/Chimney Kit A (Metal, Flat to 6/12 Pitch)	x	x					x		05000097	1			
6 Inch - Flue/Chimney Kit A3 (Metal, Flat to 6/12 Pitch, w / 3rd 36" pipe)	x	x					x		05000098	1			
6 Inch - Flue/Chimney Kit B (Metal, 6/12 to 12/12 Pitch)	x	x					x		05000099	1			
6 Inch - Flue/Chimney Kit B3 (Metal, 6/12 to 12/12 Pitch, w / 3rd 36" pipe)	x	x					x		05000100	1			
6 Inch - Flue/Chimney Kit C (Rubber - Flat to 12/12 Pitch)	x	x					x		05000101	1			
6 Inch - Flue/Chimney Kit C3 (Rubber - Flat to 12/12 Pitch, w / 3rd 36" pipe)	x	x					x		05000102	1			
8 Inch - Flue/Chimney Kit A (Metal, Flat to 6/12 Pitch)	x	x	x	x			x		05000103	1			
8 Inch - Flue/Chimney Kit A3 (Metal, Flat to 6/12 Pitch, w / 3rd 36" pipe)	x	x	x	x	x		x		05000104	1			
8 Inch - Flue/Chimney Kit B (Metal, 6/12 to 12/12 Pitch)	x	x	x	x	x		x		05000105	1			
8 Inch - Flue/Chimney Kit B3 (Metal, 6/12 to 12/12 Pitch, w / 3rd 36" pipe)	x	x	x	x	x		x		05000106	1			
8 Inch - Flue/Chimney Kit C (Rubber - Flat to 12/12 Pitch)	x	x	x	x	x		x		05000107	1			
8 Inch - Flue/Chimney Kit C3 (Rubber - Flat to 12/12 Pitch, w / 3rd 36" pipe)	x	x	x	x	x		x		05000108	1			
10 Inch - Flue/Chimney Kit A - Flat Roof to 6/12 Pitch)						x		x	05000121	1			

The flue kits are installed with every furnace and boiler and provide a means of exhausting hot combustion gases out of the heat exchanger in the furnaces and out of the combustion chamber of the boilers. The combustion gases are routed outside the building and into the atmosphere.

The flue kits are Class A, all fuel rated and meet or exceed NFPA guidelines.

The kits are packaged with some components that are custom built to mate up with EL furnace and boiler flue tubes.

The kits are also made by a supplier that is a leader in quality and durability.

The kits contain all the components necessary to construct the typical flue system without having to piece a kit together.

## Flue Kit A - Flat Roof

Item	Part Description	Qty	Item	Part Description	Qty
1	Round Top Flue Cap	1	5	Pipe Adapter-SW to DW	1
2	Storm Collar	1	6	Firestop	1
3	36 in. Double Wall Pipe, SS	2	7	Metal Flashing-Flat to 6/12	1
4	Universal Roof Support Kit	1			

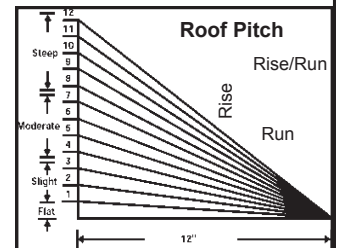
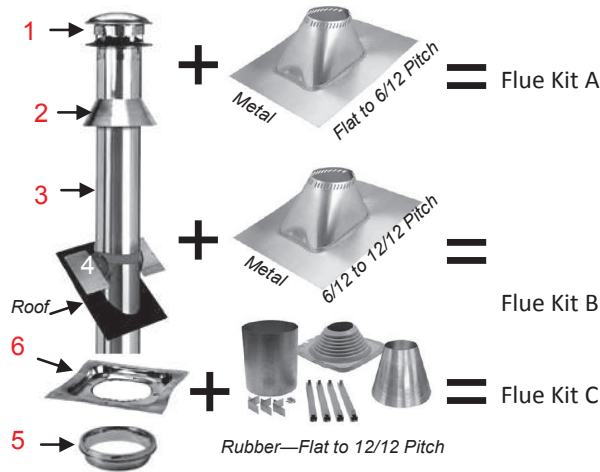
## Flue Kit B - Pitched Roof

Item	Part Description	Qty	Item	Part Description	Qty
1	Round Top Flue Cap	1	5	Pipe Adapter-SW to DW	1
2	Storm Collar	1	6	Firestop	1
3	36 in. Double Wall Pipe, SS	2	7	Metal Flashing-6/12 to 12/12	1
4	Universal Roof Support Kit	1			

## Flue Kit C - Flat to Pitched Roof

Item	Part Description	Qty	Item	Part Description	Qty
1	Round Top Flue Cap	1	6	Firestop	1
3	36 in. Double Wall Pipe, SS	2	9	Rubber Boot Kit-Flat to 12/12	1
4	Universal Roof Support Kit	1			
5	Pipe Adapter-SW to DW	1			

Note: #9 includes Storm Collar



Part Description	Current Models						Past Models		Item Number	Price			
	140H	200H	340H	200B	375B	500B	SUN2	495B		Qty			
8 Inch - Thru-the-Wall Flue/Chimney Kit	x	x	x	x	x		x		05000112	1			

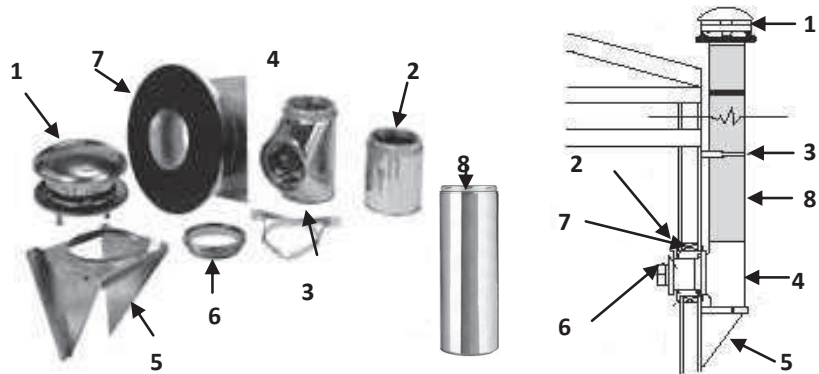
For a wall-supported chimney system with a horizontal length passing through an exterior wall, connecting to a Tee and running vertically up the exterior wall to termination above the roof line. The Thru-the-Wall Support Kit provides all the necessary parts for a complete installation plus three 3' sections of Insulated Pipe. Additional sections may be added to reach desired chimney height. One Wall Band is included in the kit. Additional Wall Bands could be required if your vertical chimney run is more than 16' high.

\*NOTE: The through the wall kit is only to be used if roof penetration is not allowed or is not possible. If the through the wall kit is used, the length of horizontal pipe should be limited to that portion that goes through the wall. The pipe that leads up to the wall should be vertical to 30 degrees. As with all flue, yearly maintenance (cleaning) is required on the horizontal section (provide method for clean out).

\*NOTE: If going through the wall in Canada, the c-UL listing requires the use of the Blocked Vent Switch Kit – Field Controls Model WMO-1 200.

## Thru-the-Wall Kit Includes

Item	Part Description	Qty
1	Round Top Flue Cap	1
2	12" Insulated Pipe Length	1
3	Wall Band	1
4	Insulated Tee/Plug	1
5	Wall Support Kit	1
6	Chimney Pipe Adapter	1
7	Insulated Wall Thimble	1
8	36 in. Double Wall Pipe SS	3



## Accessories - Flue Material



6" Flue Parts		Item		
Item	Part Description	Number	Qty	
1	Cap- Flue, Round Top	06000085	1	
2	Storm Collar	06000086	1	
3	Pipe-36 in. Double Wall, SS	06000087	1	
4	Support-Universal Roof, Kit	20702144	1	
5	Chimney Pipe Adapter	06000088	1	
6	Firestop	06000089	1	
7	Flashing-Metal, Flat to 6/12	06000090	1	
8	Flashing- Metal, 6/12 to 12/12	06000092	1	
9	Boot Kit- Rubber, Flat to 12/12	20702149	1	
24	Reducer, 8" Crimped to 6 Inch Female	06000091	1	
10	Pipe- 12 in. Double Wall, SS	06000094	1	
10	Pipe- 24 in. Double Wall, SS	06000095	1	
12	Offset- 15 Degree Elbow, Kit	06000096	1	
14	Offset- 30 Degree Elbow, Kit	06000097	1	
16	Band- Locking	06000098	1	
17	Shield- Attic Insulation	06000099	1	
18	Band- Wall	06000100	1	
19	Spark Arrestor- Flue Cap	06000101	1	
20	Tee & Plug- Insulated	06000102	1	
22	Resupport- Universal Interior	06000103	1	

Note: #22 recommended for 15° & 30° Elbows

8" Flue Parts		Item		
Item	Part Description	Number	Qty	
1	Cap- Flue, Round Top	20702140	1	
2	Collar-Storm	20702142	1	
3	Pipe-36 in. Double Wall, SS	20702143	1	
4	Support-Universal Roof, Kit	20702144	1	
5	Adapter- Pipe, SW to DW	20702145	1	
6	Firestop	20702146	1	
7	Flashing-Metal, Flat to 6/12	20702147	1	
8	Flashing- Metal, 6/12 to 12/12	20702148	1	
9	Boot Kit- Rubber, Flat to 12/12	20702149	1	
10	Pipe- 12 in. Double Wall, SS	20702150	1	
10	Pipe- 24 in. Double Wall, SS	20702151	1	
11	Elbow- 15 Degree	20702152	1	
12	Offset- 15 Degree Elbow, Kit	20702162	1	
13	Elbow- 30 Degree	20702153	1	
14	Offset- 30 Degree Elbow, Kit	20702163	1	
15	Support- Universal Wall	20702154	1	
16	Band- Locking	20702155	1	
17	Shield- Attic Insulation	20702156	1	
18	Band- Wall	20702157	1	
19	Boot-Rubber, Boot Only	20702158	1	
20	Tee & Plug- Insulated + Wall Support	13002140	1	
21	Spark Arrestor- Flue Cap	20702141	1	
22	Resupport- Universal Interior	20702159	1	
23	Insulated Wall Thimble - 12"	06000153	1	

Note: #22 recommended for 15° & 30° Elbows

10" Flue Parts		Item		
Item	Part Description	Number	Qty	
1	Cap- Flue, Round Top	20702117	1	
2	Collar-Storm	20702118	1	
3	Pipe-36 in. Double Wall, SS	20702303	1	
4	Support- Roof, Kit	20702304	1	
5	Adapter- Pipe, SW to DW	20702115	1	
6	Firestop	20702116	1	
7	Flashing-Metal, Flat to 6/12	20702307	1	
8	Flashing- Metal, 6/12 to 12/12	20702308	1	
10	Pipe- 12 in. Double Wall, SS	20702310	1	
10	Pipe- 24 in. Double Wall, SS	20702311	1	
12	Offset- 15 Degree Elbow, Kit	20702322	1	
14	Elbow- 30 Degree Elbow, Kit	20702323	1	
15	Support- Wall, Kit	20702314	1	
16	Band- Locking	20702315	1	
17	Shield- Attic Insulation	20702316	1	
18	Band- Wall	20702317	1	
21	Spark Arrestor- Flue Cap	20702321	1	
22	Resupport - Interior	20702319	1	
20	Tee & Plug- Insulated + Wall Support	13002320	1	

Note: #22 recommended for 15° & 30° Elbows

