

Keeping you Cool...

Naturally!



COOLSPACETM.com

A Product of Advanced Radiant Systems, Inc.

"It's a cool idea"

With **COOLSPACE**, you can efficiently turn a sultry workspace—or any production area—into a comfortable oasis.

How?

COOLSPACE technology combines water and forced air to reduce temperatures by as much as 26°. Additionally, the unit is portable and durable. Forget about installation with **COOLSPACE**—all you need is water and a 115 volt outlet.

And unlike many commercial air cooling systems, **COOLSPACE** doesn't require hazardous freon. **COOLSPACE** is the natural choice for environmental friendly companies.

Maintenance concerns are a thing of the past with **COOLSPACE**. The cooling unit incorporates only a few moving parts. That means you won't have to worry about a compressor, exchange unit or leaking freon. Constructed of durable, corrosion free polyethylene, **COOLSPACE** units are made to last. All units feature fans produced from industrial gauge, galvanized steel and are propelled by a totally enclosed worry-free motor.

Have we mentioned you save money too?

That's right. Since **COOLSPACE** spot cools only the work area (not the entire facility)—you save money on energy bills. With **COOLSPACE** you save money, energy and the environment.

Let **COOLSPACE** be your natural choice for cooling large enclosed areas including work spaces, air hangars, automotive, manufacturing, dry cleaners, athletic or any outdoor activity event tents.

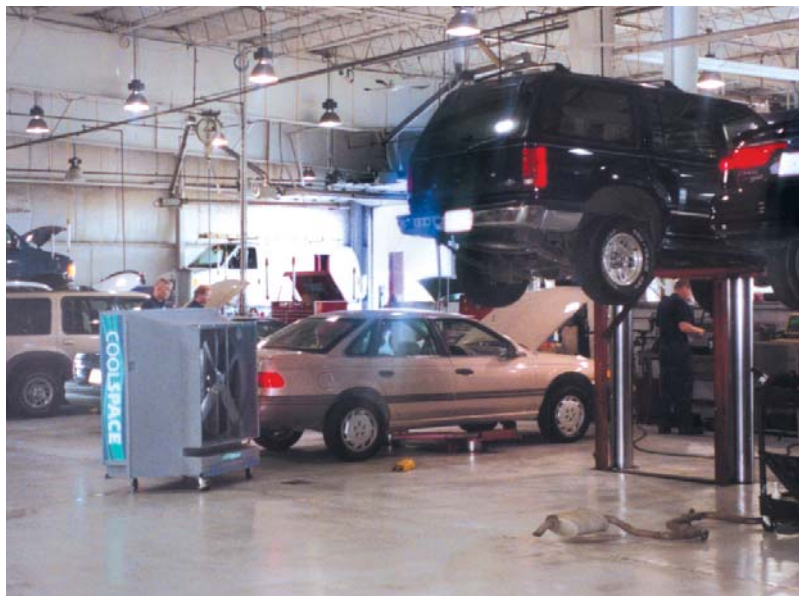
"Patented Design"

Patent No.: US D503,222S / D505193

Government/Military Approved

GS-07F-9467S

Are Your Workers Effective?



Construction

Evaporative Pads - 8 "thick cross corrugated angle fluted super saturate cellulose material treated with a thermosetting resin.

Pad Edge Coating - Stops mildew and algae growth plus strengthens the pad edge against damage.

Housing - Thick rotomolded, corrosion free polyethylene. Twice as thick as other models.

Fan - Industrial grade construction.

Fan Motor - High efficiency, totally enclosed, heavy duty.

Recirculating Pump - High efficiency maintenance free, submersible pump.

Float Valve - Corrosion and maintenance free plastic.

Water Lines/Fittings - All corrosion free materials.



COOLSPACETM.com

Save Money, Energy and the Environment

How much does "Heat Stress" cost you?

Effective Temperature	75	80	85	90	95	100	105
Loss in Work Output	3%	8%	18%	29%	45%	62%	79%
Loss in Accuracy	-	5%	40%	300%	700%	-	-



ETL & CE Approved

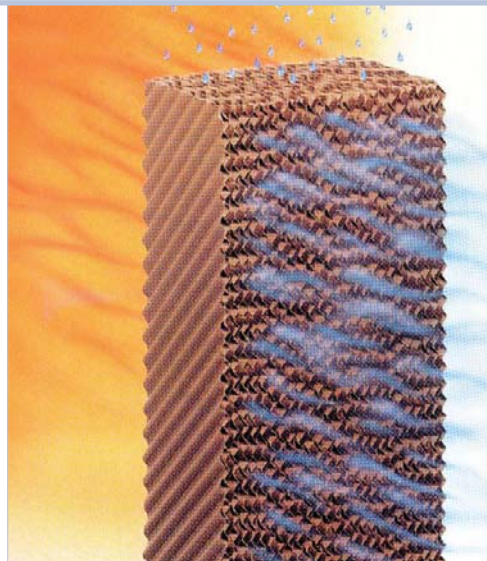
With water-tight electrical enclosure, stainless steel brackets and a special safety screen over the fan—**COOLSPACE** provides a **safer** more **durable** product.

How This Evaporative Cooler Works

The fan draws hot, dryer air through the thick wet cooling media. As water evaporates into the passing air, it displaces the heat in the air.

The Result:

Mistless discharged air of up to 26 degrees cooler!



Features

- **Largest Reservoir in the Industry**
Up to 8 hours of operation without a water supply. "No hose to work around"
- **Warranty Longest in the Industry**
2 years top to bottom, 3 years on the variable speed motor.
- **Treatment Access Plug** - allows easy access to add tablets without removing the pads.
- **Inline Water Filter** to keep debris from clogging the small holes in the water distribution bar.
- **Easy access** drain plug.
- **Completely Portable**, light enough to roll around with one hand and easily fits through doorways.
- Virtually **Maintenance Free**.
- **High Volume Cooling Capacity** up to 11,000 cubic feet per minute.
- **Filters the Air** as it passes through the cooling media eliminating many airborne particles.

36" & 48" COOLSPACE® Specifications



Model #	CS5-36-VD Variable Speed	CS5-363-B Three Speed	CS5-361-D Single Speed	CS5-48-2B Two Speed
Air Volume, CFM	2,740/9,600	5,900/7,500/9,500	9,500	12,400/19,400
Fan Motor (Totally enclosed water proof)	1/2 h.p.	3/4 h.p.	1/2 h.p.	1 h.p.
Fan Amperage	6.3	3.2/6.3/8.95	6.45	6.4/11.4
Pump Amperage	.75	.75	.75	1.1
Cooling Media	8"x 25 sq. ft.	8"x 25 sq. ft.	8"x 25 sq. ft.	8"x 36 sq. ft.
Water Reservoir	46 Gal.	46 Gal.	46 Gal.	64 Gal.
Unit Dimensions		62" w x 31 1/2" d x 69" h		75" w x 34 1/2" d x 84" h
Unit Weight	325 lbs.	325 lbs.	310 lbs.	557 lbs.
Water Supply	Garden hose connection pressure or gravity feed or hand fill			
Power Supply	120 volt/20 Amp (230v/50hz available)	120 volt/20 Amp	120 volt/20 Amp (230v/50hz available)	120 volt/20 Amp (230v/50hz available)

16" COOLSPACE® Specifications Model #CS5-162-D



(shown with optional 16-inch wheel base accessory)

	Two Speed	Two Speed
Air Volume, CFM	1,480/2,200	1,010/1,400
Fan Motor (Totally enclosed water proof)	1/3 h.p.	1/8 h.p.
Fan Amperage	2.75/3.3	2.7
Pump Amperage	.75	.3
Cooling Media	8"x 5 sq. ft.	4"x 1.9" sq. ft.
Water Reservoir	16 Gal.	6 Gal.
Unit Dimensions	25 1/4" w x 24" d x 44 1/2" h	22"x18 1/2"x29"h
Unit Weight	90 lbs.	51 lbs.
Water Supply	Garden hose connection pressure or gravity feed or handfill	
Power Supply	120 volt/15 Amp (230v/50hz available)	120 volt/3 Amp



ACCESSORIES



70 Gallon Water Tank



Directional Louvers



Scale & Algae Tablets



Flexible Ducts Kits



Pad Filters & Lint Guards



Pneumatic 8" Tires

COOLSPACE™.com

1-800-557-5716

12910 Ford Drive, Fishers, IN 46038
(317) 577-0417 FAX (317) 842-3989

A Product of Advanced Radiant Systems, Inc.

www.cool-space.com

Due to continuous product innovation, we reserve the right to change product specification without due notice.